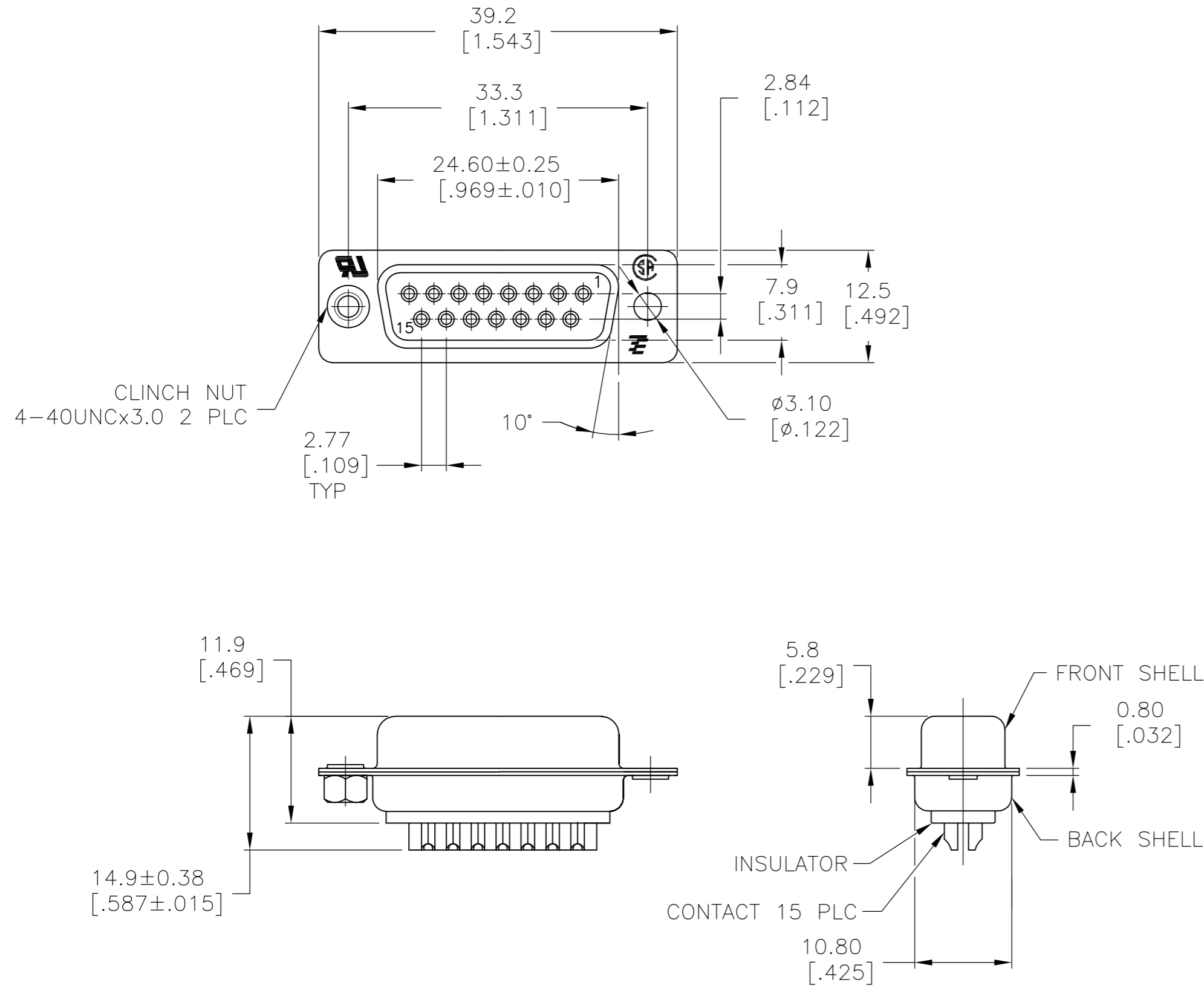


THIS DRAWING IS UNPUBLISHED. RELEASED FOR PUBLICATION
 © COPYRIGHT - By - ALL RIGHTS RESERVED.

| LOC | | DIST | | REVISIONS | | | |
|-----|-----|-------------|--|---------------------------|-----------|------|----|
| P | LTR | DESCRIPTION | | DATE | DWN | APVD | |
| GP | 00 | Z | | REVISED PER ECO-15-010090 | 16JUL2015 | AP | DG |



- 1 MATERIAL:
 BACK INSULATOR: PBT, 30 %GF, UL94V-0, BLACK COLOR
 FRONT INSULATOR: PBT, 30 %GF, UL94V-0, BLACK COLOR
 CONTACT: BRASS
 BACK SHELL: STEEL
 CLINCH NUTS: BRASS
 FRONT SHELL: STEEL
- 2 FINISH:
 CONTACT: GOLD PLATING 0.00002[.0000008] MIN ON CONTACT AREA 0.00229 [.000090] MIN TIN-LEAD PLATING ALL OVER 0.00127[.000050] MIN NICKEL
- 3 CONTACT: GOLD PLATING 0.00076[.000030] MIN ON CONTACT AREA 0.00229 [.000090] MIN TIN-LEAD PLATING ALL OVER 0.00127[.000050] MIN NICKEL
- 4 SHELL: BRIGHT TIN 0.00241[.000095] MIN FULL SHELL
- 5 SHELL: BLUE ZINC: 0.00508[.000200] - 0.00762[.000300] OVER ENTIRE SHELL
- 6 CONTACT: GOLD PLATING 0.00002[.0000008] MIN ON CONTACT AREA 0.00229 [.000090] MIN HOT DIPPED TIN-COPPER PLATING ALL OVER 0.00127[.000050] MIN NICKEL.
- 7 CLINCH NUTS: NICKEL PLATING .00305-.00508[.000120-.000200]
- 8 SPECIFICATION
 ELECTRICAL CHARACTERISTICS: CURRENT RATING: 3 AMPERES
 DIELECTRIC WITHSTANDING VOLTAGE: AC 1000V r.m.s
 INSULATION RESISTANCE: 5000 MEGOHMS MINIMUM AT DC 500V
 CONTACT RESISTANCE: 10 MILLIOHMS MAXIMUM.
- 9 ROHS 2002/95/EC COMPLIANT
- 10 RECEPTACLE ASSEMBLY MATES WITH ANY 15 POSITION PLUG IN AMPLIMITE SERIES
- 11 SOLDER CUP WILL ACCOMMODATE 20 MAX AWG WIRE.
- 12 CONTACT: GOLD PLATING 0.00076[.000030] MIN ON CONTACT AREA 0.00229[.000090] MIN HOT DIPPED TIN-COPPER ALL OVER 0.00127[.000050] MIN NICKEL PLATING

| | | | | | | |
|---|--------------------------|----------------|-------------|----------|--------|------------|
| △ | OBSOLETE | STANDARD | NO | △ | △ | 5-747909-4 |
| △ | OBSOLETE | STANDARD | YES | △ | △ | 5-747909-7 |
| | | STANDARD | NO | △ | △ | 5-747909-5 |
| | | STANDARD | NO | △ | △ | 5-747909-2 |
| | SUPERSEDED TO 5-747909-2 | STANDARD | NO | △ | △ | 747909-8 |
| | SUPERSEDED TO 5-747909-7 | STANDARD | YES | △ | △ | 747909-7 |
| | SUPERSEDED TO 5-747909-5 | STANDARD | NO | △ | △ | 747909-5 |
| | SUPERSEDED TO 5-747909-4 | STANDARD | NO | △ | △ | 747909-4 |
| | SUPERSEDED TO 5-747909-2 | STANDARD | NO | △ | △ | 747909-2 |
| | | PACKAGING TYPE | CLINCH NUTS | CONTACTS | SHELLS | PART NO. |

| | | | | | | |
|------------------------------------------------------------------------------------------|--------------|------------------------------|--------------------------------------------------------------------|-------|-----------|------------|
| THIS DRAWING IS A CONTROLLED DOCUMENT. DIMENSIONING AND TOLERANCING PER ASME Y14.5M-2009 | | DWN M.BINNER 03MAR03 | TE Connectivity | | | |
| DIMENSIONS: mm [INCHES] | | CHK R.BENDORF 05MAR03 | RECEPTACLE ASSEMBLY, SOLDER CUP, SIZE 2, 15 POSN, HD-20, AMPLIMITE | | | |
| TOLERANCES UNLESS OTHERWISE SPECIFIED: | | APVD R.BENDORF 05MAR03 | NAME | SIZE | CAGE CODE | DRAWING NO |
| 0 PLC ± - | 1 PLC ± 0.25 | PRODUCT SPEC | | A2 | 00779 | C=747909 |
| 2 PLC ± 0.13 | 3 PLC ± 0.05 | APPLICATION SPEC | | | | |
| 4 PLC ± - | ANGLES ± 4° | | | | | |
| MATERIAL | FINISH | WEIGHT | | SCALE | SHEET | REV |
| 1 | SEE TABLE | - | | 2:1 | 1 of 1 | Z |
| CUSTOMER DRAWING | | | | | | |